

3" BiRotor Models B060, B061, B063, B064, B065

Description

The BiRotor Meter is a positive displacement meter utilized in the most demanding applications requiring accuracy, long life and ruggedness. The electronic "P" Series meter configuration features a sealed measuring chamber with one reluctance type electronic sensor. The sealed electronic sensor transmits amplified signals to local or remote instruments. A second optional sensor is available to allow dual channel pulses that are 90 degrees electrically out of phase.

Accuracy is attained by the unique BiRotor design which features two finely balanced rotors. An adjuster, incorporated on the meter, is used to assure maximum accuracy within the meter's flow range (Mechanical Only).

Long Life is assured because the meter does not contain any oscillating, reciprocating, sliding parts or cranks to wear or disturb the balanced rotary action. In addition, the materials incorporated within the meter assembly are selected specifically for a wide range of petroleum and industrial liquid applications.

Electrical Classification (P-Style)

Class 1, Groups C & D, Division 1, Explosion proof; Recommended connecting cables Belden 8770, 3 Conductor Shielded, 18 gauge stranded. Maximum recommended cable length 3000 feet (914 meters). Input power: 6-28 Vdc at 20 mA, Output Signal: TTL (0-5V) or voltage dependent.

Principle of Operation

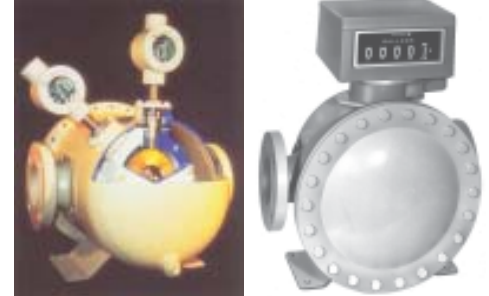
Two spiral fluted rotors within the measuring unit are dynamically balanced to minimize bearing wear. (Refer to Figure 1). As the product enters the intake of the measuring unit, the two rotors divide the product into precise segments of volume momentarily and then return these segments to the outlet of the measuring unit. During this "liquid transition", the rotation of the two rotors is directly proportional to the flow rate of the liquid thruput. A gear train located outside the measuring unit chamber conveys mechanical rotation

Flow Capacity

250 GPM
946 LPM
357 BPH

*Intermittent Flow Capacity

300 GPM
1,135 LPM
428 BPH



**5 hours or less in a 24 hour period*

WARNING

Do NOT operate this instrument in excess of the specifications listed. Failure to heed this warning could result in serious injury and/or damage to the equipment.

of the rotors to a mechanical or electronic register for totalization of liquid thruput. For P-Style units, a pulse verification gear located outside the measuring unit chamber conveys mechanical rotation of the rotors to the sensor and to the electronic register for totalization of liquid thruput.

Design Features

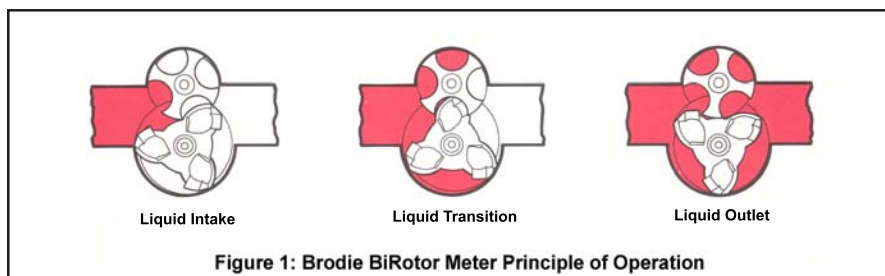
- Extremely long service life
- Economical low maintenance
- Two simple rotors with no metal-to-metal contact are the only moving parts in the measuring chamber.
- No oscillating, reciprocating or sliding parts or cranks to wear or disturb the balanced rotary action.
- Conforms with International standards of flowmeter accuracy.

Accessories (Mechanical)

- Preset Counters
- Control Valves
- Large Numerical Registers
- Pulse Transmitters
- Ticket Printers
- Strainers

Accessories (P-Style)

- Electronic Register
- Preamp
- Dual Pickoffs for "B" Level Pulse Security



Materials of Construction

Housing: Welded Steel Construction Combining
Steel Castings and Drawn Steel Plate

Measuring Unit:

Rotors: Three Lobe Rotor - Cast Iron
Four Fluted Rotor - Aluminum

Rotor Shafts: E.T.D. 150

Rotor Bearings: Stainless Steel

Body and End Covers: Cast Iron

Counter Base Plate:

Body: Steel

O-Ring: Viton (Standard)

Drive Shafts, Drive Gears, and Ball Bearings:
Stainless Steel

Accuracy:

Capable of +/- 0.15%; Contact Factory for viscosity corrections.

Flange Connections

Model	Connections	Max Working Pressure @100F	DIN Connections	Max Working Pressure
*B060	3" 150 lb. ANSI	150 PSI	DN 80 PN 16	10.3 Bar
B061	3" 150 lb. ANSI	285 PSI	DN 80 PN 16	16 Bar
			DN 80 PN 40	19.6 Bar
B063	3" 300 lb. ANSI	300 PSI	DN 80 PN 40	20.7 Bar
B064	3" 300 lb. ANSI	740 PSI	DN 80 PN 40	40 Bar
			DN 80 PN 64	51 Bar
B065	3" 600 lb. ANSI	1480 PSI	DN 80 PN 64	64 Bar
			DN 80 PN 100	100 Bar

Temperature Range: -20F to 150F (-29C to 66C) Optional 450F (232C)

*150# meters Classified as Sound Engineering Practice under Pressure Equipment Directive

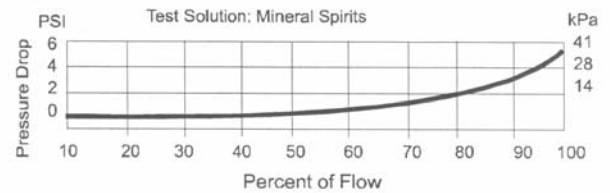
Flow Capacity

Meter Models B061, B063, B064, B065		
	Maximum Flow	Minimum Flow
GPM	250	25
LPM	946	95
BPH	357	36

For Certified Dimensional Prints - Consult Factory

Shipping Weight and Volume (Approximate)	
B060	98 lbs. @ 2.5 Cu. Feet 44 kgs. @ .07 Cu. Meters
B061	112 lbs. @ 2.6 Cu. Feet 51 kgs. @ .08 Cu. Meters
B063	210 lbs. @ 5.1 Cu. Feet 95 kgs. @ .14 Cu. Meters
B064	285 lbs. @ 7.3 Cu. Feet 129 kgs. @ .21 Cu. Meters
B065	452 lbs. @ 7.6 Cu. Feet 205 kgs. @ .22 Cu. Meters

Typical Pressure Drop Curve



Ordering Information

In order to accurately process an order, such information as product to be metered, product viscosity, product temperature range, ambient temperature range, rate of flow, operating pressure, units of registration, accessories required, and optional features needed must be specified by the customer.

K-Factor/Pulses (P-Style)

Electronic Pulses (K-Factor)	Gallons	Liters	BBL
	100	26.4	4,200

The contents of this publication are presented for informational purposes only, and while every effort has been made to ensure their accuracy, they are not to be construed as warranties or guarantees, express or implied, regarding the products or services described herein or their use or applicability. Brodie Meter Co., LLC reserves the right to modify or improve the designs or specifications of such products at any time without notice.



19267 Highway 301 North (30461)
PO Box 450 • Statesboro, GA 30459-0450
Phone: (912) 489-0200 • Fax: (912) 489-0294
www.brodieintl.com