

WP-Dynamic

Turbine Water Meter

For cold water up to 122°F

Sizes 2", 3", 4", 6", 8", 10", 12"



Description / Application

- Bulk liquid meter for cold water service
- Measurement of high, relatively constant flow rates e.g. behind pumps
- With its high degree of accuracy and the versatility of its accessories, it can be utilized for automatic batching, local or remote totalization or remote rate of flow indication

Special Features

- Hermetically sealed register
- Patented hydro-dynamically balanced rotor
- Patented symmetrical calibration adjustment
- Register may be rotated 360°
- Waterproof roller register can be removed for repositioning without breaking the main seal of the meter
- Register available in U.S. Gallons, Cubic Meters or Barrels
- High overload capability
- Pattern approved removable measuring unit
- Powder coating affords maximum corrosion protection

Options

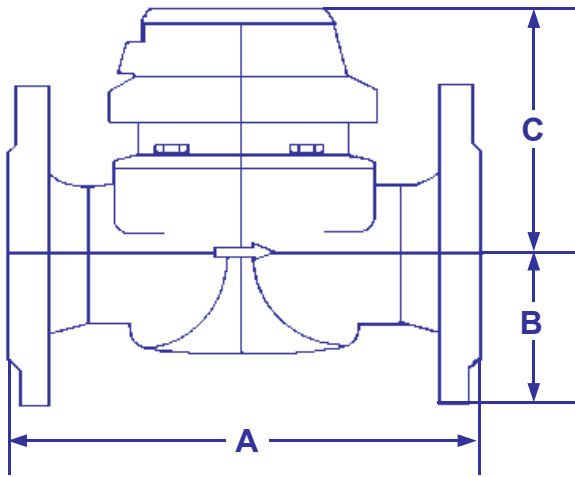
- Pulsers
Available in two styles:
(depending on required pulses per revolution of the roller register dial)
RD-01, RD-02, OPTO-1, OPTO-2
- Mechanical Counters
- Electronic Counters
- Flow Rate Indicators
- Frequency to Current Converter

Your Local Representative is:

MEINECKE

Copyright © 2002 by Cross Instrumentation
Specifications subject to change without notice - 08/15/02

Dimensions



Installation Considerations

1. The installation site should be chosen so that an unrestricted straight pipe of at least 3 Pipe Diameters is ensured.
2. The Pipe Diameter should not be reduced directly in front of or behind the meter.
3. All Regulation of the flow should be done behind the meter.
4. The meter must be installed in the pipe free of stress.
5. The location of the meter should be such that it is not possible for air pockets to develop in the meter I.e. the meter should not be at high points in the pipeline or operated under half full pipe conditions.

NOTE: Refer to Meinecke Water Meter Operating Instructions (Pamphlet Y128E) for complete operating instructions.)

Meter Size	2"		3"		4"		6"		8"		10"		12"	
	in.	mm	in.	mm	in.	mm	in.	mm	in.	mm	in.	mm	in.	mm
A	7 7/8	200	8 15/16	225	9 13/16	250	11 13/16	300	13 3/4	350	17 11/16	450	19 11/16	500
B	2 7/8	73	3 3/4	95	4 1/8	105	5 5/16	135	6 3/8	162	7 5/8	194	8 7/8	226
C	4 3/4	120	5 7/8	150	5 7/8	150	6 15/16	177	8 1/8	206	9 1/8	231	10 1/16	256
Weight	lbs	kg	lbs	kg	lbs	kg	lbs	kg	lbs	kg	lbs	kg	lbs	kg
Meter	16.98	7.70	29.98	13.60	39.68	18.00	78.26	35.50	111.33	50.50	159.39	72.30	218.92	99.30
Measuring Element	3.09	1.40	6.61	3.00	6.61	3.00	12.13	5.50	16.53	7.50	16.53	7.50	16.53	7.50
Body	13.89	6.30	23.37	10.60	33.07	15.00	66.14	30.00	94.80	43.00	140.65	63.80	202.38	91.80

Material

Body	Cast Iron
Measuring Element	Plastic
Rotor	Plastic
These Materials Are Also Used:	Stainless Steel, Brass

Installation

Pipe	Horizontal	
	Vertical	
	Inclined	
Meter Head	Upwards	
	Sideways	

Your Local Representative is:

MEINECKE

Copyright © 2002 by Cross Instrumentation
Specifications subject to change without notice - 08/15/02

Performance Data WP-D Cold	2"		3"		4"		6"		8"		10"		12"	
	GPM	m3/hr	GPM	m3/hr	GPM	m3/hr	GPM	m3/hr	GPM	m3/hr	GPM	m3/hr	GPM	m3/hr
Maximum Peak Flow	396.4	90.0	880.8	200.0	1321.3	300.0	2642.5	600.0	5285.0	1200.0	7046.7	1600.0	8808.3	2000.0
Continuous Flow	220.2	50.0	528.5	120.0	1013.0	230.0	1981.9	450.0	3523.3	800.0	5505.2	1250.0	6165.8	1400.0
Transitional Flow	3.1	0.7	3.5	0.8	7.9	1.8	17.6	4.0	26.4	6.0	48.4	11.0	66.1	15.0
Minimum Flow	1.3	0.3	2.2	0.5	3.5	0.8	7.9	1.8	17.6	4.0	26.4	6.0	52.9	12.0
Starting Flow	0.7	0.2	1.1	0.3	1.1	0.3	4.4	1.0	6.6	1.5	13.2	3.0	35.2	8.0

Table 1 - Cold Water WP-Dynamic Turbine Water Meters

Size	2"	3"	4"	6"	8"	10"	12"
Model Number WP-D	82 85 95	82 86 01	82 86 03	82 86 07	82 87 17	82 87 19	82 87 43
Same As:	3332A-02A3-1AA	3332A-03A3-1AA	3332A-04A3-1AA	3352A-06A3-1AA	3352A-08A3-1AA	3352A-10A3-1AA	3352A-12A3-1AA

ORDERING INFORMATION

To Order, please specify the following:

Model Code: See Table 1

Flange Drilling: ANSI 150 R.F.

Register Reading: U.S. Gallons, Cubic Meters, Barrels

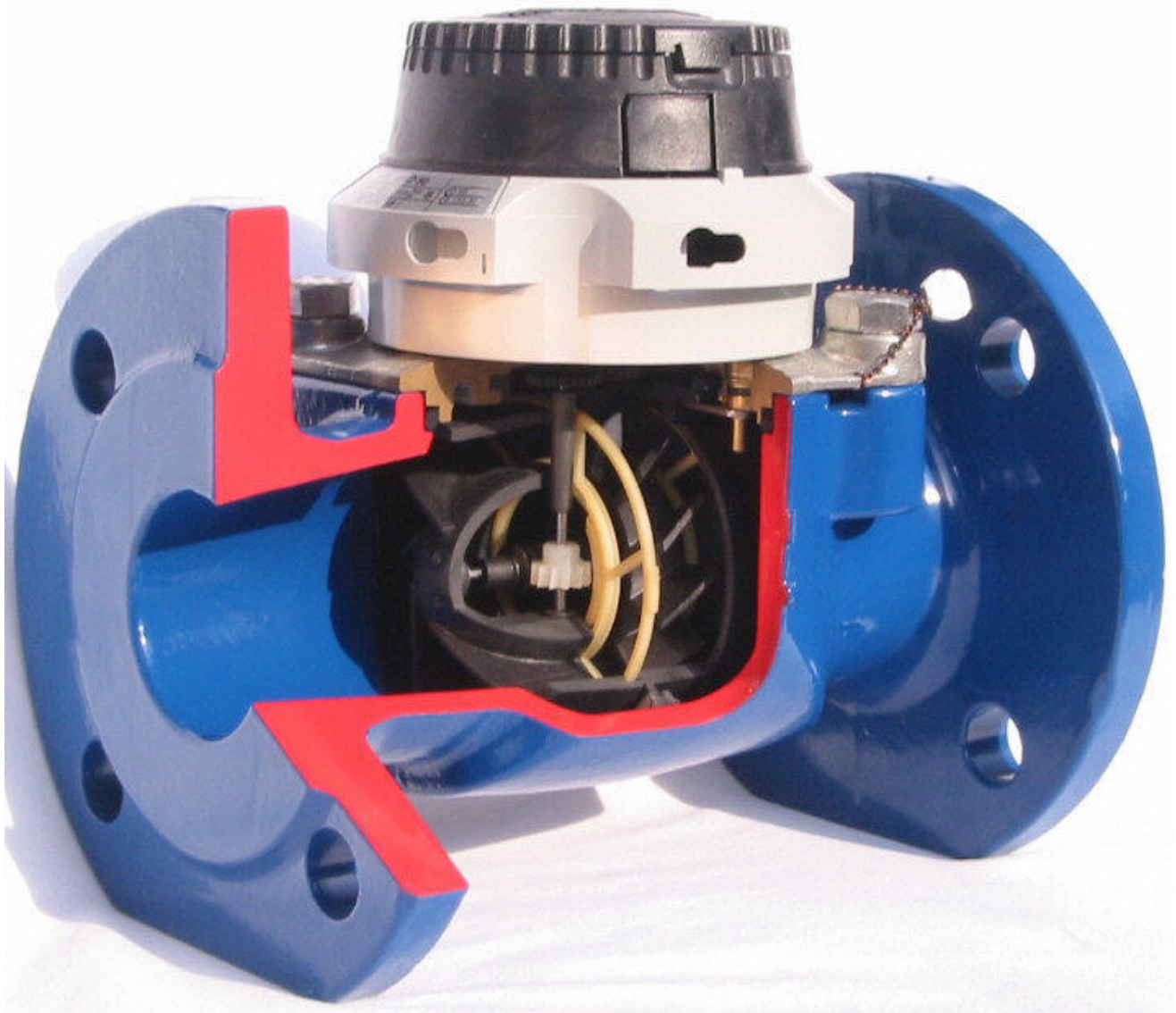
Options: Pulsers: RD-01, RD-02, OD-01, OD-02
 Frequency To Current Converters: FM-1D/K
 FM-2D/K

The information provided in this brochure has been compiled and published as a convenience to our customers. All technical designs, advice, and recommendations, including but not limited to, that appearing on this document are rendered free of charge. As a result, Cross Instrumentation disclaims any responsibility or liability to the buyer or user of this information for any result obtained or damages incurred by reason of the use or application of the design or other information contained herein. This information is intended for use by skilled persons at their own risk. Where exact specifications are critical to the design and use of this product, it is recommended that the buyer and/or user refer to the Official Data Sheets published by the manufacturer and available online at: <http://www.meinecke.de>

Your Local Representative is:



Copyright © 2002 by Cross Instrumentation
 Specifications subject to change without notice - 08/15/02



Your Local Representative is:

MEINECKE

Copyright © 2002 by Cross Instrumentation
Specifications subject to change without notice - 08/15/02