

ELDRIDGE PRODUCTS, INC.

2700 Garden Road, Building A
Monterey, California 93940



Fax 831/648-7780
Telephone 831/648-7777
Email sales@epiflow.com
Internet www.epiflow.com

Analog Flow Switches

The Series 7000–7200 flow switches are analog instruments designed for use in hazardous locations. The Series 7000–7200NH flow switches are designed for use in non-hazardous surrounding environments. These flow switches have two single-pole, double-throw relays for Hi/Hi, Lo/Lo and Hi/Lo capability. The contact closure is 5 amps @ 24 VDC and 115 VAC.

Series 7000–7200

Series 7000–7100 flow switches are analog, inline style instruments. Series 7200 flow switches are analog, insertion style instruments. All of our analog flow switches have the electronics mounted integrally on the flow section.

Series 7000–7100 flow sections for pipes ¾" and larger have flow straightening screens as standard. Flow sections have MNPT ends as standard. Depending on the line size, a variety of alternatives are available, including ANSI 300lb. and DN flanges, butt ends, tri-clover fittings, etc.

A variety of installation options are available for Series 7200 flow switches, including ball valve retractor assemblies, tube to pipe compression fittings, and probe mounted flanges.

This Series is CE, FM, CSA, and CENELEC approved.

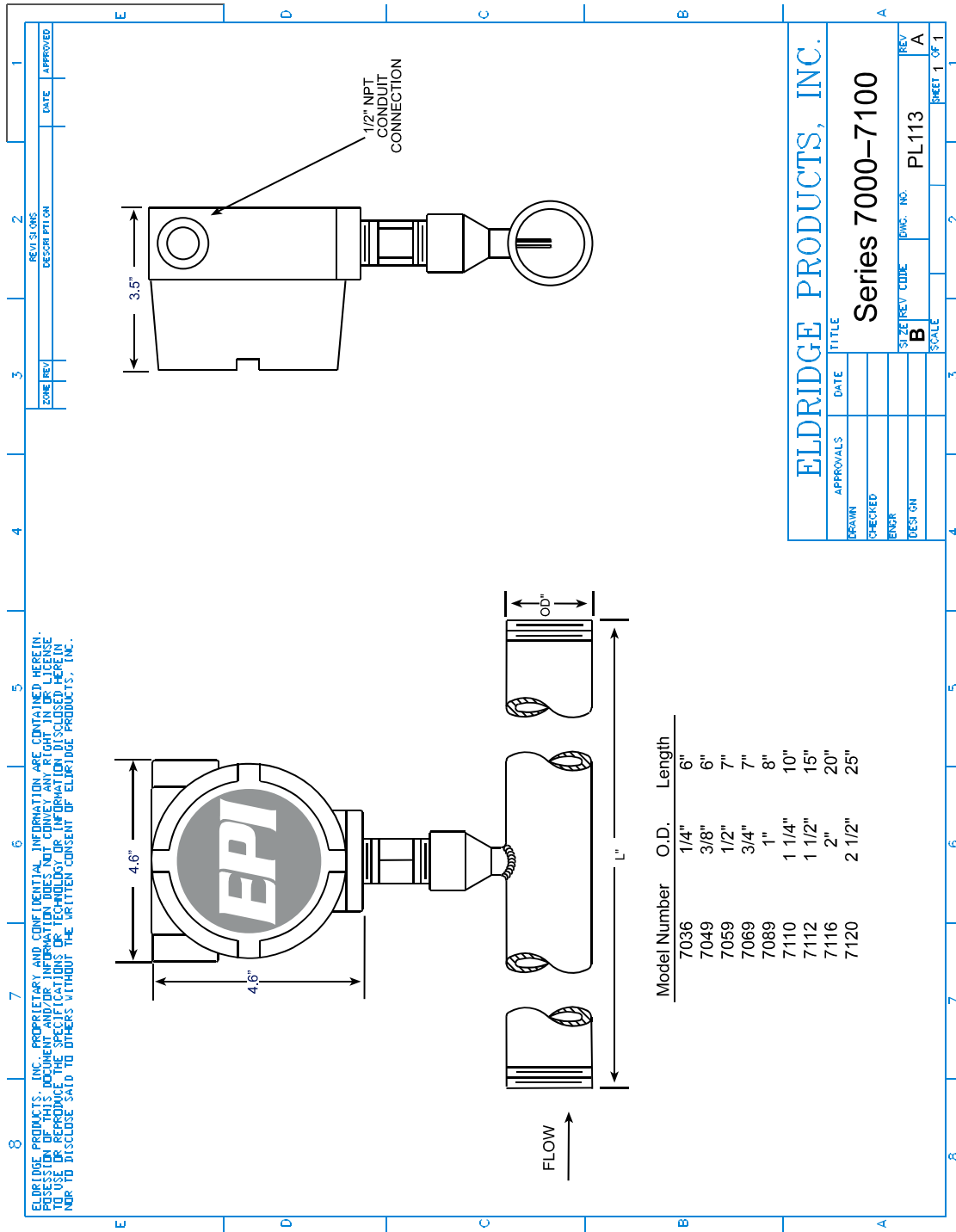
Specifications

Trip point accuracy (Ref.: 21°C)	±1% of set point
Repeatability	±0.5% of Full Scale
Sensor response time	1 second
Range (gas)	0 – 15,000 SFPM, typical
Range (liquid)	0 – 5 SFPS, typical
Electronics temperature range.....	0°–50°C (32°–122°F), extended temperature optional
Fluid temperature range*	–40°–200°C (–40°–392°F), extended range available
Gas pressure effect (liquid n/a).....	Negligible over ± 20% of set point pressure
Pressure rating maximum	500 PSI Std., > 500 PSI special
Input power requirement	24 VDC @ 250mA 115 VAC 50/60 Hz optional 230 VAC 50/60 Hz optional
Flow Transmitter power requirements	5 Watts maximum
Flow Transmitter enclosure	NEMA 4, Class 1, Div 1, Groups B, C, & D, Std.
Wetted materials	316 Stainless Steel (Hastelloy and Monel optional)
Standard temperature & pressure (STP)	70°F & 29.92" Hg (Air .075 lb./cubic foot)
NIST traceable calibration	Standard

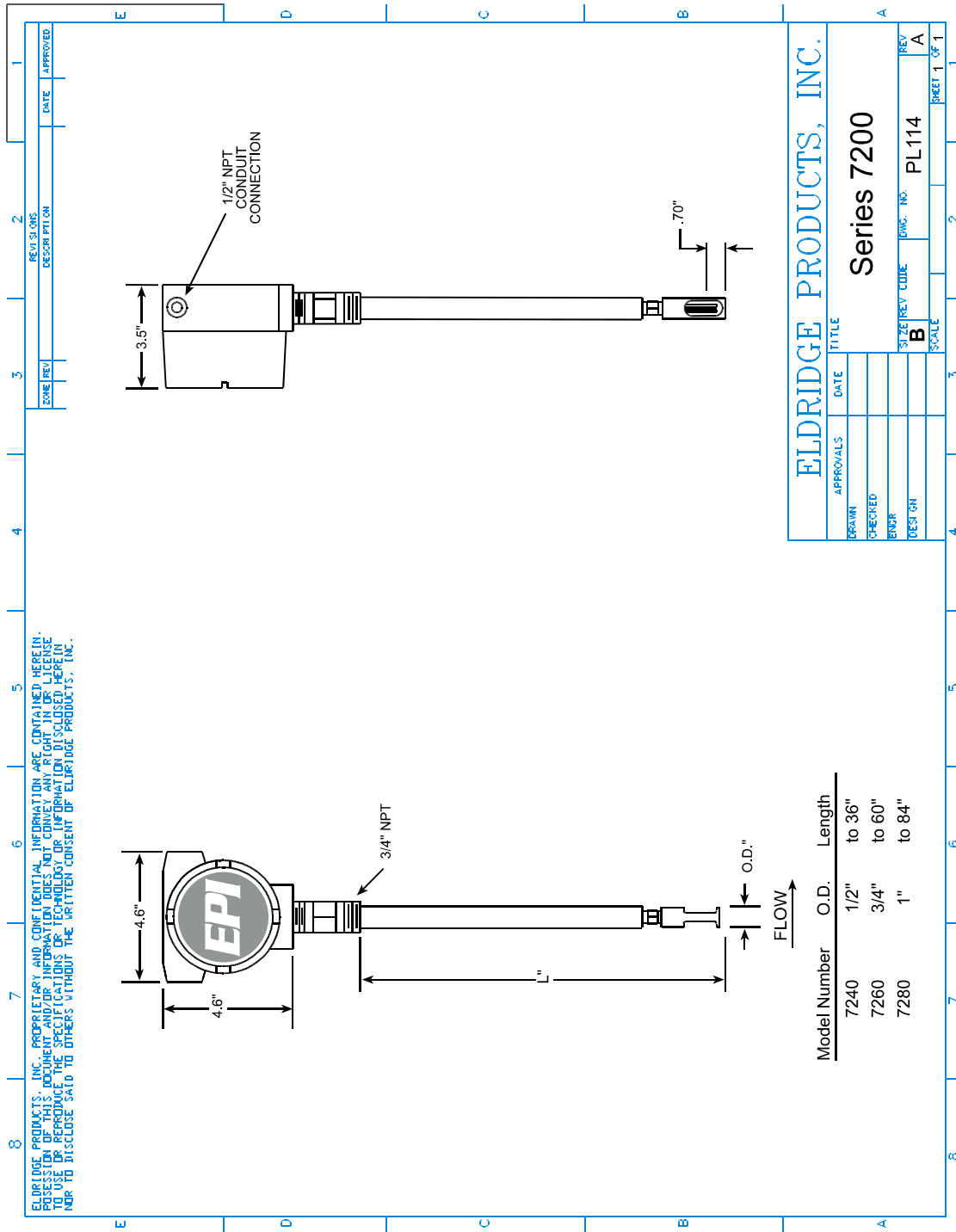
*SSM option required for 100°–200°C (212°–392°F)

ELDRIDGE PRODUCTS, INC.

Series 7000-7100



Series 7200



ELDRIDGE PRODUCTS, INC.

Series 7000–7200NH

Series 7000–7100NH flow switches are analog, inline style instruments. Series 7200NH flow switches are analog, insertion style instruments. All of our analog flow switches have the electronics mounted integrally on the flow section.

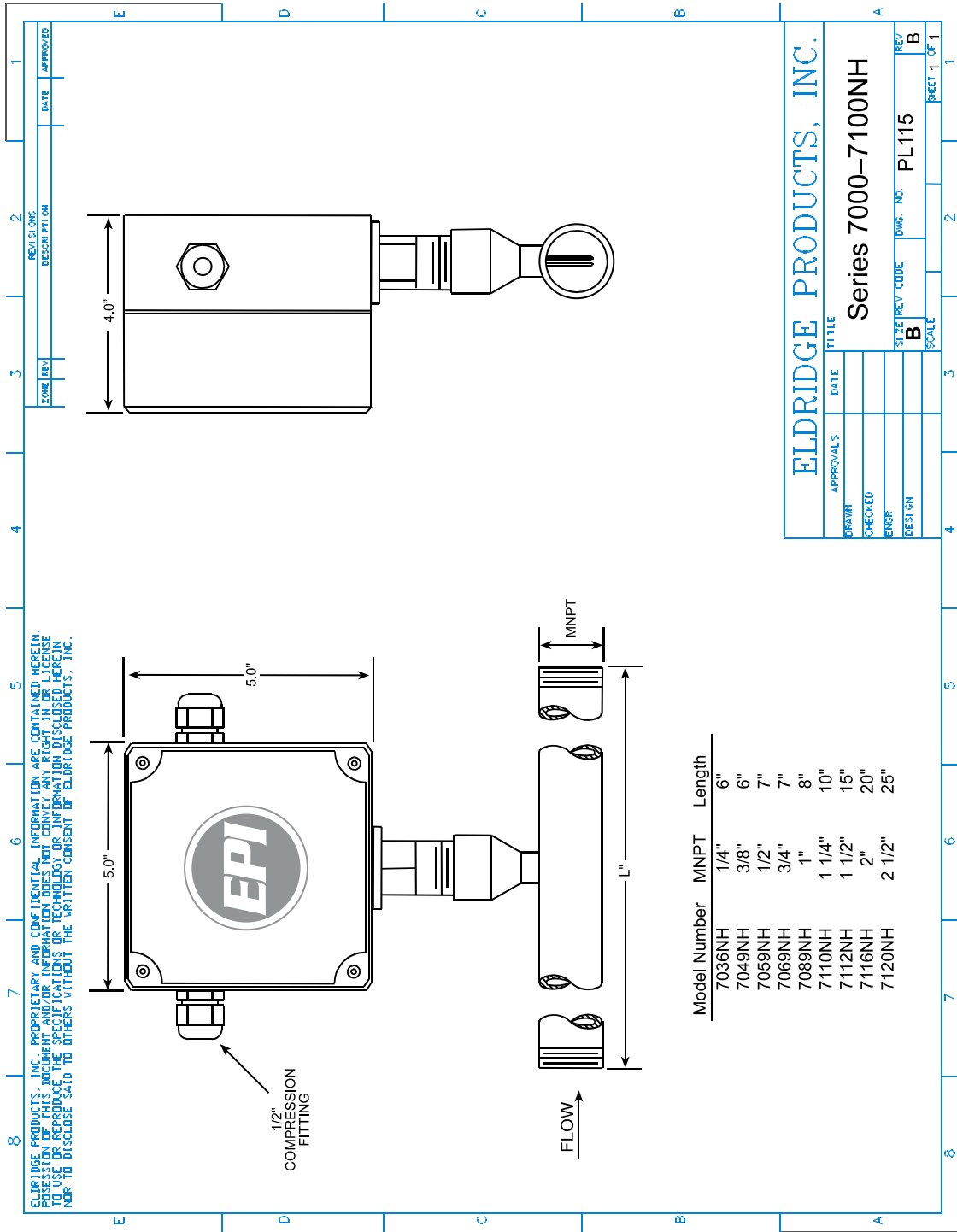
Series 7000–7100NH flow sections for pipes 3/4" and larger have flow straightening screens as standard. Flow sections have MNPT ends as standard. Depending on the line size, a variety of alternatives are available, including ANSI 300lb. and DN flanges, butt ends, tri-clover fittings, etc.

A variety of installation options are available for Series 7200NH flow switches, including ball valve retractor assemblies, tube to pipe compression fittings, and probe mounted flanges.

Specifications

Trip point accuracy (Ref.: 21°C)	±1% of set point
Repeatability	±0.5% of Full Scale
Sensor response time	1 second
Range (gas)	0 – 15,000 SFPM, typical
Range (liquid).....	0 – 5 SFPS, typical
Electronics temperature range.....	0°–50°C (32°–122°F), extended temperature optional
Fluid temperature range*	-40°–200°C (-40°–392°F), extended range available
Gas pressure effect (liquid n/a).....	Negligible over ± 20% of set point pressure
Pressure rating maximum	500 PSI Std., > 500 PSI special
Input power requirement	24 VDC @ 250mA 115 VAC 50/60 Hz optional 230 VAC 50/60 Hz optional
Flow Transmitter power requirements	5 Watts maximum
Flow Transmitter enclosure	NEMA 4X, ABS plastic with clear polycarbonate cover, 5" x 5" x 4"
Wetted materials	316 Stainless Steel (Hastelloy and Monel optional)
Standard temperature & pressure (STP)	70°F & 29.92" Hg (Air .075 lb./cubic foot)
NIST traceable calibration	Standard

*SSM option required for 100°–200°C (212°–392°F)



ELDRIDGE PRODUCTS, INC.

Series 7000-7100NH

APPROVALS	DATE	TITLE
DRAWN		
CHECKED		
ERROR		
DESIGN		

SIZE	REV. CODE	WORK. NO.	REV.
B		PL115	B

SCALE: SHEET 1 OF 1

