

Brooks® 4800 Series

4850 Mass Flow Controller 4860 Mass Flow Meter

GENERAL FEATURES:

- Wide FS flow range for measurement and control of common gases from 50 mln/min to 40 lln/min
- Optional local operator interface (LOI) for control and configuration
- Accuracy options: $\pm 1\%$ FS or $\pm 3\%$ FS
- Compact size reduces space and eases installation
- Fast response time of <300 msec
- Storage of up to 9 selectable gas calibrations allows reduction in spares inventory
- Fully RoHS compliant

DESCRIPTION

The Brooks 4800 line of mass flow meters and controllers is an excellent choice for measurement and control of many common gases including air, N_2 , O_2 , Ar, He, H_2 , CO_2 , CO, N_2O , CH_4 , C_3H_6 , and C_3H_8 . It offers a broad flow range, fast response time, compact size, and many other benefits for a variety of applications.

The 4800 Series MEMS-based sensor provides lightning fast response times.

The 4800 Series utilizes a Micro Electro Mechanical System (MEMS) based thermal sensor. Unlike traditional thermal sensors, MEMS sensors are fabricated from a silicon wafer.

Like traditional thermal sensors, the MEMS sensor measures a change in temperature to determine mass flow rate. Because the gas flows directly across the sensor, extremely fast response times can be achieved.

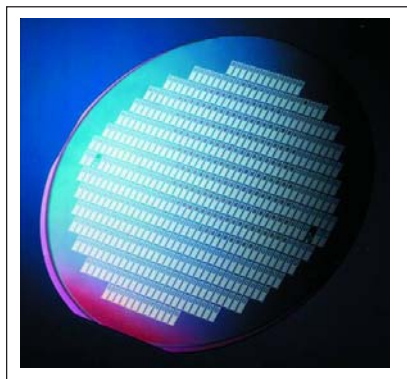


Figure 1 Silicon Wafer with MEMS Devices

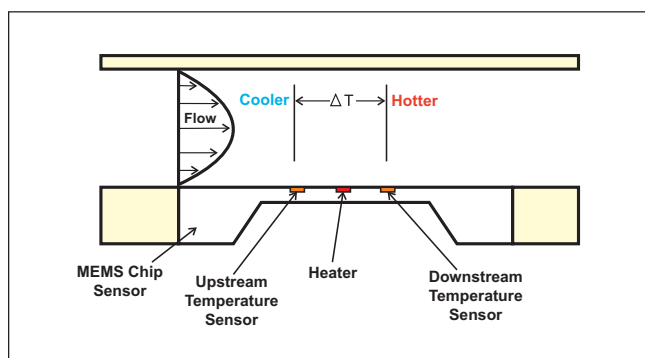


Figure 2 Gas Flow Across the MEMS Sensor

* All performance characteristics are at calibration conditions.

Brooks® 4800 Series

Fast settling times come standard with the 4850 controller. The 4850 MFC version uses a proprietary PID algorithm to optimize the control valve response to ensure rapid settling times. The 4850 can be counted on to quickly match actual mass flow to any changes in setpoint.

Good things come in small packages. The MEMS sensor enables a dramatic reduction in size compared to traditional thermal mass flow sensors. In fact the compact size of the 4800 Series is significantly less in height and volume than that of typical thermal mass flow controllers.

The 4800 Series is ideal for OEMs. The broad flow range, fast response time, and compact size make for a perfect fit into any OEM system where gas flow needs to be measured or controlled. Additionally, the 4800 Series has a highly modular construction for quick assembly in order to meet short delivery dates.

The local operator interface simplifies set-up and operation. This option provides a convenient user interface to view, control and configure the Brooks 4800 Series thermal mass flow devices.

SPECIFICATIONS

PERFORMANCE CHARACTERISTICS*:

Flow Range

FS ranges from 50 mln/min – 40 ln/min
(50 sccm – 40 slpm)
(N₂ eq., at reference 0°C)

Control Range

2 – 100%

Accuracy Options

±3.0% of FS
±1.0% of FS

Repeatability

±0.15% of FS

Response Time

Flow signal: <0.3 sec
Flow control: Settling time <0.75 sec form 0 to 100%
FS (typical <0.5 sec for all steps)

Temperature Coefficient

±0.1% FS/°C (N₂)

RATINGS:

Gases

Air, N₂, O₂, Ar, He, H₂, CO₂, CO, N₂O, CH₄, C₃H₆, C₃H₈
(other gases upon request)

Operating Limits

Pressure: 0 – 10 barg (0 - 150 psig)
Temperature: 0 - 50°C
Operating Humidity: 5 to 95% R.H. (ambient)

Pressure Differential Range (Controllers)

Minimum: 0.35 bar (5 psid)
Maximum: 10 bar (150 psid)

Leak Integrity

Inboard to Outboard: 1x10⁻⁹ atm scc/sec Helium max.

MECHANICAL CHARACTERISTICS:

Materials of Construction

Wetted parts: stainless steel, fluoroelastomers,
silicon-based sensor

Outline Dimensions

Refer to Figures 3 and 4

Process Connections

Inlet/Outlet threads: 9/16" – 18 UNF threads
Refer to Figures 3 and 4
for available process connections.

ELECTRICAL CHARACTERISTICS:

Electrical Connections

15-pin D-sub connector
(pin-out schematic shown in Table 1)
All pins shall be protected against ESD
(Electro Static Discharge)

** For high flows or low differential pressures (using orifices 0.049" (1.25mm) or 0.079" (2.0mm) only 24 Vdc power is available.

Power Supply Voltage**

+15 Vdc \pm 10% or

+24 Vdc \pm 10%

Device only uses single sided power supply

Inrush current: <1 A

Power Requirements

Device	15 Vdc		24 Vdc	
	Typical (mA)	Max. (mA)	Typical (mA)	Max (mA)
4860 (without valve)	30	60	30	60
4850 (with valve)	130	160	150	200

Analog Input/Output

0 – 5 Vdc or 4 – 20 mA

Digital Input/Output

RS-232

Valve Override Signal

Valve controller: Input Open

Valve closed: <0.3 V; Valve open: >4.8 V

Calibration Curve Selection

Select one of nine gases via the LOI or RS232. Optional software tool for ease of RS232 connection is available on the Brooks Instrument website. Contact your Brooks representative or the factory for details and cable options.

Local Operator Interface (LOI):

Display

Effective display area: 28 mm wide, 11 mm high

Display contents: 8 x 2 dot matrix display

Operating Limits

Temperature: 0-50°C

Operating Humidity: 5 to 95% R.H. (ambient)

ELECTRICAL CHARACTERISTICS:

Electrical Connections

2 15-pin D-sub connectors, one for connection to the 4800 Series device and one for the remote connection

Power Supply Voltage

The LOI optionally includes a wall mount power adaptor with a 3.5-mm DC-plug. The adaptor works with input voltages of AC 90-240 V/47-63Hz. The adaptor supports European, U.K. and U.S. wall plugs. Power can also be supplied by a remote connection via the D-connector.

Materials of Construction

Enclosure: ABS plastic with CU-Ni plating.

Outline Dimensions

Refer to Figure 5

Table 1 15-Pin D-Sub Connector Pin-Out

PIN #	4800 Series	5850TR	S – SERIES (58xxS)
1	SETPOINT SIGNAL COMMON	ANALOG COMMON	SETPOINT SIGNAL COMMON
2	FLOW VOLTAGE OUTPUT	FLOW VOLTAGE OUTPUT	FLOW VOLTAGE OUTPUT
3	N.C.	N.C.	ALARM OUTPUT
4	FLOW CURRENT OUTPUT	FLOW CURRENT OUTPUT	FLOW CURRENT OUTPUT
5	POSITIVE SUPPLY VOLTAGE	POSITIVE SUPPLY VOLTAGE	POSITIVE SUPPLY VOLTAGE
6	N.C.	N.C.	NEGATIVE SUPPLY VOLTAGE
7	SETPOINT CURRENT INPUT	SETPOINT CURRENT INPUT	SETPOINT CURRENT INPUT
8	SETPOINT VOLTAGE INPUT	SETPOINT VOLTAGE INPUT	SETPOINT VOLTAGE INPUT
9	POWER SUPPLY COMMON	POWER SUPPLY COMMON	POWER SUPPLY COMMON
10	FLOW SIGNAL COMMON	FLOW SIGNAL COMMON	FLOW SIGNAL COMMON
11	N.C.	5V REFERENCE	5V REFERENCE
12	VALVE OVERRIDE INPUT	VALVE OVERRIDE INPUT	VALVE OVERRIDE INPUT
13	N.C.	N.C.	N.C.
14	RXD	N.C.	RXD / A-
15	TXD	N.C.	TXD / A+

Brooks® 4800 Series

CERTIFICATIONS:

These certifications cover the 4800 Series mass flow devices as well as the local operator interface (LOI).

EMC Directive 89/336/EEC: Per EN 61326

Hazardous Location Classification

The modules shall be installed in a suitable enclosure providing a degree of protection of at least IP54 according to EN 60529, taking into account the environmental conditions under which the equipment will be used.

Provisions shall be made to prevent the rated voltage from being exceeded by transient disturbances of more than 40 %.

Enclosure: Type 1/IP40

Ambient Temperature:

0°C ≥ Tamb ≤ 50°C (32°F ≥ Tamb ≤ 122°F)

United States and Canada

Europe - ATEX Directive 94/9/EC

KEMA 06ATEX0251 per EN 60079-15: 2003



Non-Incendive,
Class 1, Division 2
Groups A, B, C & D; T4



II 3 G EEx nA II T4



Per UL 1604 and CSA-C22.2 no. 213-m87

Pressure Equipment Directive (97/23/EC):
Sound Engineering Practice.

Class 1, Zone 2, AEx nA II T4

Per ANSI/ISA 12.12.02 - 2003 and ANSI/UL 60079-15

Ex nA II T4

Per CSA - E79 - 15

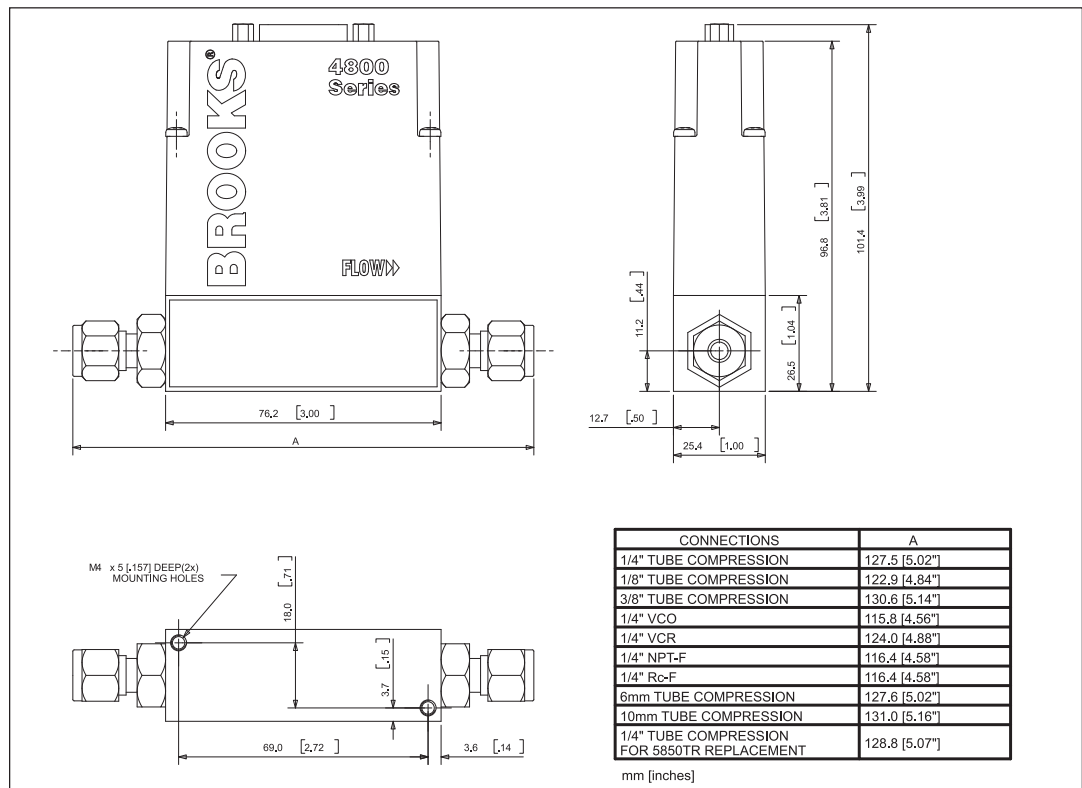


Figure 3 Dimensions for Model 4850/4860 with Standard Process Connections

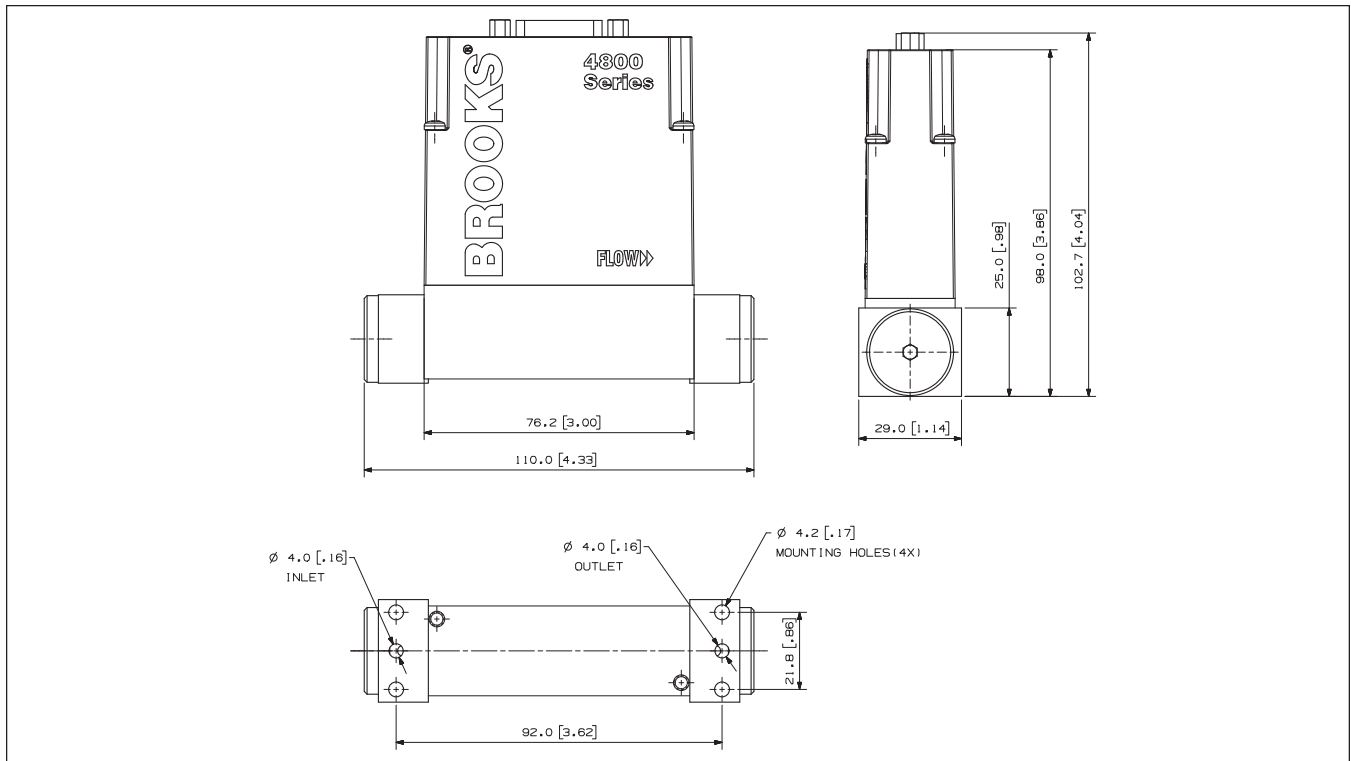


Figure 4 Dimensions for Model 4850/4860 with Downport Connections

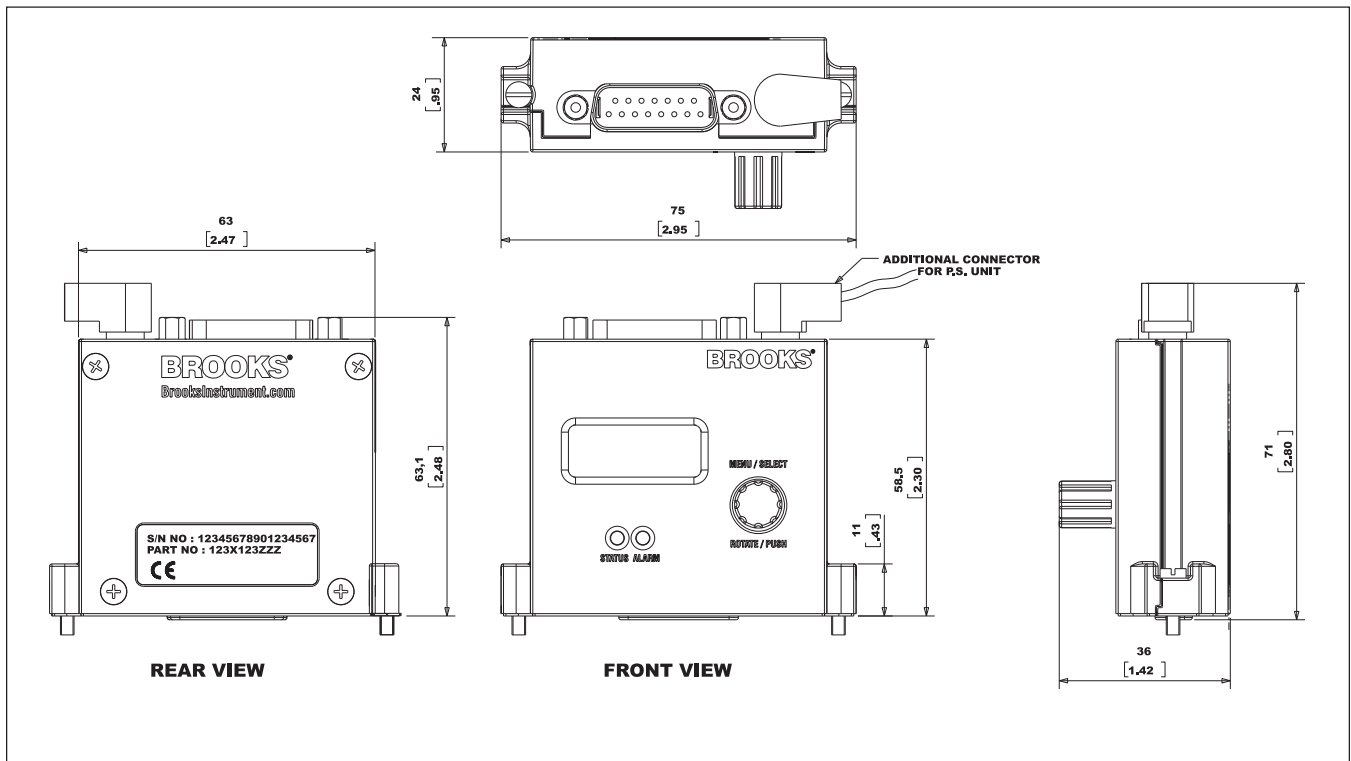


Figure 5 Dimensions for Model 4800 Series LOI

Brooks® 4800 Series

BROOKS SERVICE AND SUPPORT

Brooks is committed to assuring all of our customers receive the ideal flow solution for their application, along with outstanding service and support to back it up. We operate first class repair facilities located around the world to provide rapid response and support. Each location utilizes primary standard calibration equipment to ensure accuracy and reliability for repairs and recalibration. The primary standard calibration equipment to calibrate our flow products is certified by our local Weights and Measures Authorities and traceable to the relevant International Standards.

Visit www.BrooksInstrument.com to locate the service location nearest to you.

START-UP SERVICE AND IN-SITU CALIBRATION




Brooks Instrument can provide start-up service prior to operation when required. For some process applications, where ISO-9001 Quality Certification is important, it is mandatory to verify and/or (re)calibrate the products periodically. In many cases this service can be provided under in-situ conditions, and the results will be traceable to the relevant international quality standards.

CUSTOMER SEMINARS AND TRAINING

Brooks Instrument can provide customer seminars and dedicated training to engineers, end users and maintenance persons. Please contact your nearest sales representative for more details.

HELP DESK

In case you need technical assistance:

Americas	 1 888 554 FLOW
Europe	 +31 (0) 318 549 290
Asia	 +81 (0) 3 5633 7100

Due to Brooks Instrument's commitment to continuous improvement of our products, all specifications are subject to change without notice.

TRADEMARKS

Brooks Brooks Instrument, LLC



Brooks Instrument
407 West Vine Street
P.O. Box 903
Hatfield, PA 19440-0903 USA
T (215) 362 3700
F (215) 362 3745
E-Mail BrooksAm@BrooksInstrument.com
www.BrooksInstrument.com

Brooks Instrument
Neonstraat 3
6718 WX Ede, Netherlands
T +31 (0) 318 549 300
F +31 (0) 318 549 309
E-Mail BrooksEu@BrooksInstrument.com

Brooks Instrument
1-4-4 Kitasuna Koto-Ku
Tokyo, 136-0073 Japan
T +81 (0) 3 5633 7100
F +81 (0) 3 5633 7101
E-Mail BrooksAs@BrooksInstrument.com